

OMCO

ENTERPRISES (P)LTD

“HEARTILY WELCOMES”



D-U-N-S NO
65-008-8029



HEARTILY WELCOMES

ESTEEMED OEMS

KEY DECISION MAKERS

GLOBAL TRADE SPECIALIST



COMPANY OVERVIEW



Established

1973

Board of Directors

Mr. O.P. Sehgal (Managing Director)
Mr. Mohit Sehgal (Director)

Head Office

Plot No. 30/4, Wear Well Cycle Compound,
Industrial Area, NIT, Faridabad (H.R)

Plant Locations

Faridabad - SGM Nagar, Bhakri & NIT
Faridabad – SGM Nagar

Total Covered Area

4800 sq. yard

Total Strength

150 Nos.



ABOUT COMPANY

OMCO is in the business of manufacturing precision machined & fabricated parts for esteem customers in Automobile, Agriculture ,Combine Harvester, Railways, Defence, Electricals & other sectors.

The Company has shown consistent improvement in its performance over the years & is now ready for substantial growth.



Why Choose Us

OUR USP



Just in time development



Hassle free supplies



Zero defect



We treat next operation as customer

Vision / Mission



Our Vision, well accepted name in Domestic Market & wish to expand wings in overseas market & to be known as **Quality, Cost & Service conscious** Manufacturer of tailor made components with highest degree of Precision for Automobile, Agriculture, Combine Harvester, Defence, Railways, Electricals & other sectors



We want to improve further by bringing out changes related to improvements of **safety** of our **employees, environment** & upkeep of **morale**

POLICY & OBJECTIVES

QMS POLICY



M/S OMCO ENTERPRISES PVT. LTD. is committed to provide total satisfaction to all its customers by producing Quality goods consistently as per their requirement by strict adherence to laid down procedures and systems. We shall strive for continual improvement in quality of product and process by sustained team spirit & hard work.

QMS OBJECTIVES



ZERO CUSTOMER COMPLAINT



REDUCE INTERNAL REJECTION



100% ON TIME DELIVERY



CONTINUAL IMPROVEMENT

POLICY & OBJECTIVES

EHS POLICY

Safety & Health
Objectives



M/S OMCO ENTERPRISES PVT. LTD. is committed to achieve continual improvement in Environment, occupational Health & safety performance for manufactured machine components through;

- ❖ Prevention and protection of environmental pollution.
- ❖ Prevention of work related injury & ill health to its personnel & other interested parties.
- ❖ Complying with applicable legal/regulatory & other Environmental Occupational Health & Safety requirements.
- ❖ Optimizing use of resources including reuse & recycle of material.
- ❖ Eliminating Hazards and by reducing OHS risks.
- ❖ By consultation and participation of workers in EHS.
- ❖ Building awareness by effectively communicating our EHS policy across the supply chain & work force.

EHS POLICY

To reduce Oil Consumption.

To reduce Water Consumption..

To reduce Electricity Consumption.

To reduce Coolant Consumption.

To Increase number of Accident Free Man-day's.

To Ensure Compliance with Legal Requirement.

To Ensure Consultation & Participation of Workers.

TECHNOLOGICAL UPGRADATIONS

- ▶ **Ultrasonic Washing Testing:**
Facility also added.
- ▶ **Millipore testing:**
Facility also added.
- ▶ **Eddy Current Sorter:**
Added to inspection facilities.
- ▶ **Semi Automatic-MPI:**
Added to check surface cracks.
- ▶ **Image Analyser facility:**
Added to check Welding penetration.
- ▶ **Versa Controls Pneu Gage-T7V:**
Implementation under discussion. (To Check & Records Cp, Cpk, Pp, Ppk, Run/Bar Chart Electronically at CNC Machining & Grinding stage)



- ▶ **Polygon Turning (02 Nos.) :**
Introduced to overcome conventional milling of Hex, Squares, Octagonal etc.
- ▶ **Digital Height Master**
Added to inspection facilities.
- ▶ **Contour – CARLZEISS**
CarlZeiss make testing facility added.
- ▶ **Roughness Tester – CARLZEISS**
CarlZeiss make added to inspection facility.
- ▶ **Vicker Hardness Tester**
Added recently in laboratory testing.

SPECIAL TESTING EQUIPMENT'S



CONTOUR (CARL ZEISS) – 1600G
MODEL

Technical Specification –

- Straightness Accuracy $1\text{ }\mu\text{m} / 100\text{ mm}$
- Pick up / Z axis Range Inductive /50 mm
- X Axis Range 100mm
- Resolution $0.1\text{ }\mu\text{m} / 5\text{ mm}$, $0.4\text{ }\mu\text{m} / 20\text{ mm}$, $1\text{ }\mu\text{m} / 50\text{ mm}$ range
- Speed of Measurement 0.03 mm/sec to 6 mm/sec
- Max Loading capacity 40Kg
- Column height 250mm
- Granite size 600 mm X 317mm



Ultrasonic Washing



Metallurgical Microscope



Surface Tester (CARL ZEISS) –
Surfcom Touch 50

Technical Specification –

- Straightness Accuracy $0.3\text{ }\mu\text{m} / 50\text{ mm}$
- Pick up / Z axis Range 1000 μm
- X Axis Range 50mm
- Resolution 0.1 Nano meter @ $\pm 40\text{ }\mu\text{m}$ Range
- Speed of Measurement $0.05 - 3.0\text{ mm/Sec}$

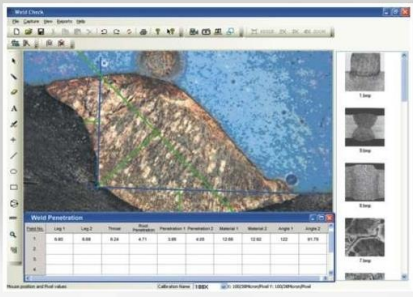


Millipore Testing Lab



Digital Height Master

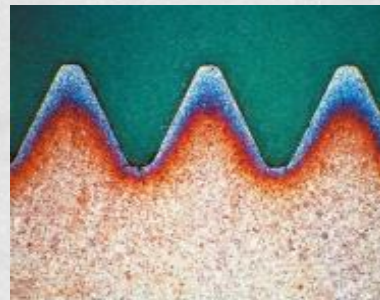
SPECIAL TESTING EQUIPMENT'S



Microscope with Software for welding penetration



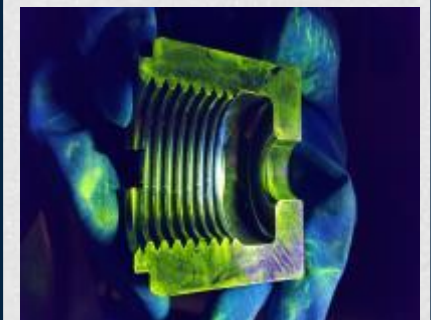
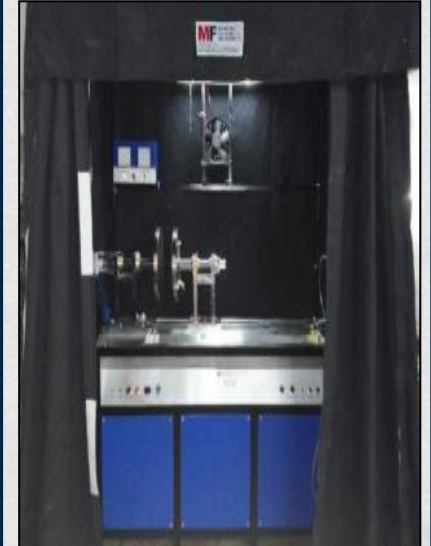
Vicker Hardness tester with Micro Structure Analysing software



Metallurgy Lab



Eddy Current Sorter



Semi automatic MPI Testing

ORGANIZATION STRUCTURE



AWARDS & ACHIEVEMENTS

Best Kaizen
Award from
Escorts Kubota



Best Alliance ,Goal
achievement award
by Eicher Group

Excellence in Quality,
Cost & Delivery



Best Supplier
Award by CNH



Silver Cup
2021

Gold Cup
2022



OUR ESTEEMED CUSTOMERS



Target customers



PRODUCTS & INDUSTRY APPLICATION



Tractor Commodities



Combine Commodities



Fork Lift Commodities



4 Wheeler Commodities



Rail Vehicle



Defence



Bus



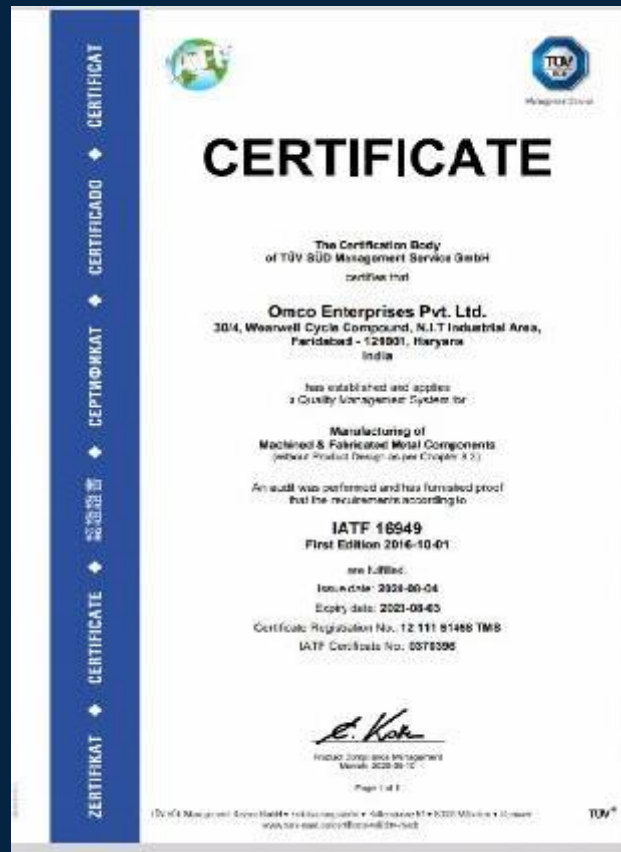
CERTIFICATIONS

IATF 16949:2016

ISO 9001:2015

ISO 14001:2015

ISO 45001:2018



CERTIFICATIONS



LIST OF MACHINARIES



S.No.	Machine	Qty
1	CNC MACHINE	42 Nos
2	VMC MACHINE	4 Nos
3	CENTRELESS GRINDERS	6 Nos
4	CYCLINDRICAL GRINDER	4 Nos
5	SURFACE GRINDER	5 Nos
6	THREAD ROLLING(CIRCULAR)	6 Nos
7	THREAD ROLLING(FLAT)	3 Nos
8	INDUCTION HARDENING	2 Nos
9	WELDING MACHINE	6 Nos
10	CIRCULAR SAW	3 Nos

OUR CAPABILITIES

CNC Section



LINE 1



LINE 2

OUR CAPABILITIES



VMC Section



Drilling Section



Grinding Section



Threading Section



Broaching Machine

OUR CAPABILITIES



Turning



Milling



Grinding



Threading



Welding



Polishing



Drilling



Tapping



Millipore Washing



Boring



Broaching



Induction Hardening

RANGE OF PRODUCTS AT A GLANCE



CUSTOMER WISE PRODUCT (ESCORT KUBOTA)

Break Assemblies & Linkages & Other Machined Parts



CUSTOMER WISE PRODUCT (RANE STEERING)



Tilt Bolt



Tilt Bolt



Pivot (Hex) Bolt (M8
X1.25 X 24)

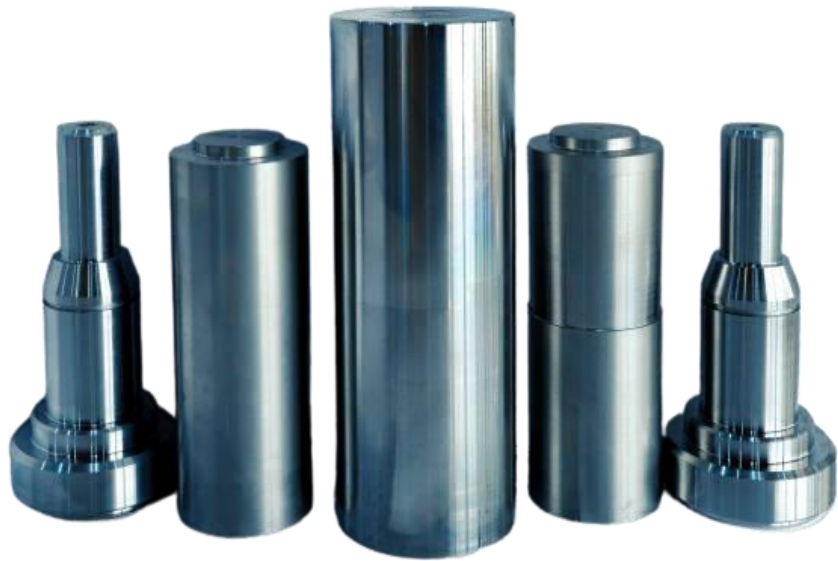


Bolt Plate



Tilt Bolt

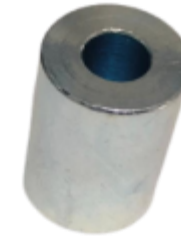
CUSTOMER WISE PRODUCT (MANITOU)



Special Pins and Bushes



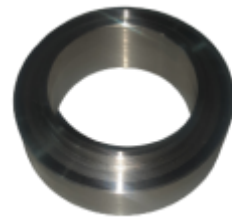
Pin Collar Pivot



Spacer Alternator



Spacer



Bushes



Pins and PTO Link Assemblies

CUSTOMER WISE PRODUCT (EICHER GROUP)



Cup Spring



Plug
M18X1.5



Crimping
Nut



Holder
Spring



Banjo Bolt



Spacer



Cyl. Clamping
Rod



Special
Screw



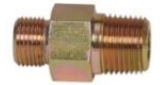
Extension
Rod



Union 3/4



Pin crank



Nipple



Pin Parking
Pawl



Bulk Head Union
3/4-16UNF



U Bolt



Hinge
Shaft



Pin Chain
assy



Lever for Hi
Low

CUSTOMER WISE PRODUCT (NEW HOLLAND)



Retainer for
Axle Shaft



Bushing ACP
Pivot



Seal Ring



Shaft Reverse
Gear



Spindle



PTO Engage
Rod



RG Shaft



Pin Front Rod



Pipe Socket



Adaptor Fuel
outlet



Bush Brake
Housing



Planet
Retain



Nut



Pad PTO
Shifting



Nut, Stake, M45X
1.5-5H



Driven Gear
Bushing

TESTIMONIALS



Very good machining facilities. OMCO has a very good potential to be great stakeholder of component manufacturing industries in India. All the best wishes to OMCO MD, Director & Staffs – **Mr. Ramakrishna Lakshmanan, Project Manager-Supplier Quality Global Sourcing, Dover India Pvt Ltd, Bangalore**



Clean premises, planned layout, good metallurgical facility and sufficient instruments are available. Good response from OMCO team - **Mr. Aravindan KV, Deputy Manager SQA, Rane NSK Systems Private Limited**



I think they are good inspection work as a company. There are many more products in the pipe, let us work together for the betterment of both companies.- **Mr. Kawatoku Hiroaki, Procurement Head Quarters, Gear & Shaft Procurement Section Manager, Kubota Corporation, Japan**



Layout well designed and state of art facility. Environment of working area & working culture is excellent. Management policy towards customer is remarkable. Overall it is satisfied one. All the best for future growth – **Mr. Arindam Patra, Sr Technical Officer & HOD(TR), Central Institute of Plastics Engineering & Technology**



Plant was very clean and 2S was very good. You are doing lot inspection very well but after inspection & before inspection should be clearly differentiated. You are doing KAKU S very well, make jigs as per Kubota as well – **Mr. Takahiro Fumoto, Inspection Dept, Inspection Section, Sakai Plant, Kubota Corporation, Japan.**



2S Jigs management has been done well. As even the quality has been maintained well, please continue in the same manner- **Mr. Shinichi Uchihara, Assistant Foreman, Procurement Management Section, Procurement Dept, Kubota Corporation, Japan**



Firm maintained state of art CNC lines and capable of doing precision components. Even raw material testing and colour codes system adopted by OMCO industry highly impressive. Wishing all the best for future- **Mr. P.M. Halageri, Jr Works Manager, High Explosives Factory, Ministry of Defence, Govt of India, Khadki, Pune**

EMPLOYEE ENGAGEMENT AND MOTIVATION



Award winners cheering



Outdoor Get Together

CUSTOMER ENGAGEMENT



CUSTOMER AWARD CEREMONY



2017



Best Quality
Award from
**TMTL &
KUBOTA**



2018



2019



2021



2022

Contact Us

Managing Director – Mr. O.P. Sehgal

Contact No: +91 9811047307

Email Id : opsehgal@omcoenterprises.net

Director – Mr. Mohit Sehgal

Contact No: +91 9999998637

Email Id : mohitsehgal@omcoenterprises.net



30/4 Wearwell Cycle Compound,
Industrial Area, NIT
Faridabad 121001, Haryana, India.

***If you think you can,
you can !***

